

# Handwashing Puzzle

See following pages for larger images. Laminate if desired.

Children can work on remembering steps of handwashing by putting the cards in the correct order. The pictures are currently in the correct order (wet hands, apply soap, lather, rinse off soap, dry hands, and turn off tap).



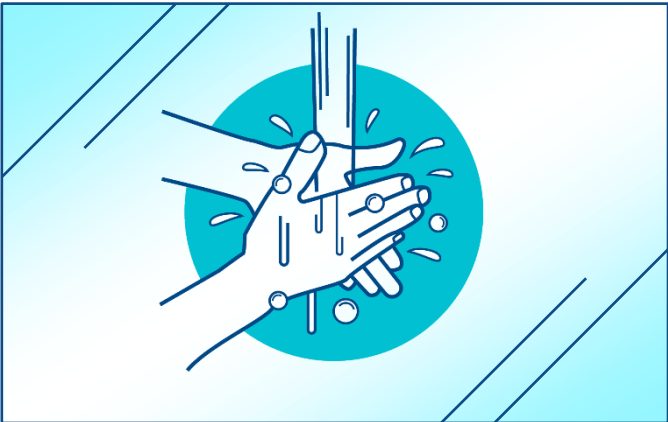
**Wet hands**



**Apply plain soap**



**Rub hands together**



**Rinse your hands**



**Dry your hands**



**Turn off taps with paper towel**











